

Design criteria of the Bernalillo County Courthouse

The Courthouse design responds to eight criteria.

IMAGE— A person should instinctively read the building as a courthouse and know that this is a place of impartial justice.

SECURITY — An open justice system is tempered by the understandable reactions to violence within the courthouse and the need to provide security for all users. Four elements are incorporated the Public, Employees, Prisoners, and the Interface.

ACCESS — Barrier-free design considerations start at the curb and extend to the courtrooms.

FLEXIBILITY — The Courthouse has permanent and flexible spaces, which are adjustable to prevent obsolescence.

QUALITY— All materials and finishes are a high quality befitting a public edifice with appropriate life-cycle cost.

FUNCTIONAL ORGANIZATION — Sensibly planned efficient arrangements needing the fewest staff.

DESIGN EFFICIENCY— Designers used a ratio of occupiable area to gross area to measure the design efficiency

ENVIRONMENTAL SYSTEMS— Large amounts of daylight were incorporated in the design. Lighting fixtures were specially designed for the building. The Heating/Cooling system works in concert with the building design. Careful attention was given to acoustics and energy efficiencies were considered throughout the building.

Courthouse Facts:

- 272,284 square feet
- Seven stories, 25 courtrooms, including a large special proceedings courtroom
- Cost \$38,000,000
- A classic design with Spanish colonial influence. Massive stones placed on the front of the building in light shades of brown and gold reflect the earth tones of New Mexico. New Mexico travertine, is used in a band around the middle of the building. The pacific blue color of the roof is reflective of the blue New Mexico skies.
- The courthouse contains a state of the art security system, low profile access flooring, and an integrated building management control system.
- As a result of the "1% for the Arts program," a Courthouse Art Collection was established worth close to \$1 million dollars.
- The Bernalillo County Courthouse's distinctive design is an L-shaped configuration. Its two story lobby is accented with split-faced stone, polished travertine, ornamental metal and glass railing, woodwork and a patterned terrazzo floor.

Second Judicial
District Court

400 Lomas Ave. NW
P.O. Box 488
ALBUQUERQUE, NM 87102
Phone: 505-841-7425
Fax: 505-841-6705
Email: albdkmy@nmcourts.com

*New Mexico Second Judicial
District Court*



TOUR GUIDE

*Inspiring Unity and Pride Through a
Shared Vision of Justice*



Tour Path

First Floor– From the Lobby looking east you can see the bronze water feature by Dan Davidson. Closer to the entry are two classic bronze urns by Kellogg Johnson. Each urn measures 6 feet across and



Stylized wings protect a Spanish tower and a Native American bowl.



Classic bronze urns frame the entry

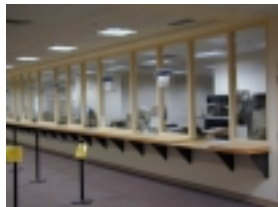


Painting by renowned artist Wilson Hurley

weighs 700 lbs. In the Lobby is a bas-relief of the County Seal. On the walls are two paintings by Wilson Hurley depicting the westside of

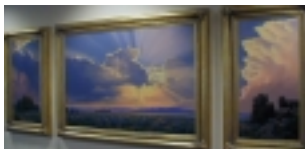


Paul Sanchez is inspired by his cultural heritage in "Life in Armijo"



Clerks counter

the Sandia Mountains. **CLERKS AREA:** Counter, docketing, filing. "Life in Armijo" by Paul Sanchez. **JURY ASSEMBLY ROOM:** "Gentle



A triptych is a set of three related pictures

Light of Evening landscape triptych by Farmington artist John Cogan, fabricated bronze quilt by Bill Weaver.

Second Floor - Grand Staircase recalls a fea-

ture from the 1926 Courthouse. "8:30 PM" an atmospheric landscape by Angus Macpherson.



Old Road to Bernalillo

Well known local artist, Victoria Martinez-Rogers painting entitled "Old Road to Bernalillo." **COURT CLINIC, DOMESTIC RELATIONS, DOMESTIC VIOLENCE, SECURITY BOOTH, CHILD SUPPORT, and**

COURT REPORTERS. Bronze animals by Michele VandenHeuvel, "Fridolin Finds a Friend" and "Papa Jan G. Raffe." Also, a watercolor by popular artist Steve Hanks "Big Shoes to Fill.



Papa Jan G. Raffe waits for a visitor

Third Floor- Painting of the Sandia Mts. by Arturo Antonio Usner y Chavez hangs in "Roux's Niche." "San Ignacio" and "San Agustin," pencil and watercolor drawings by Filomeno Marti-



"San Agustin" by Filomeno Martinez



A painting of the Sandia Mts. occupies "Roux's Niche." Named for County project manager Jim Roux

nez. Period piece "In Good Hands" by Gerald Farm is down the hall next to the Special Proceeding Courtroom. **ADMINISTRATIVE OFFICE SUITE, GRAND JURY, and CONFERENCE CENTER.**

Fourth Floor– The Atrium displays two grand pieces from the Courthouse Collection. A large tapestry by Nancy Kozikowski, "Red Chief's Blanket." This piece measures 8' X 30' and hangs in a



"Red Chief's Blanket" by Nancy Kozikowski

specially created space. The tapestry was purchased from the Phoenix Hyatt Hotel by the County



The signature work of the Courthouse Collection, *In Light of Justice II*, a glass and steel sculpture by Ken Leap

Arts Board. The architect used the cross motif from the tapestry throughout the building. The glass sculpture by Ken Leap incorporates a new technique in glass developed by the artist

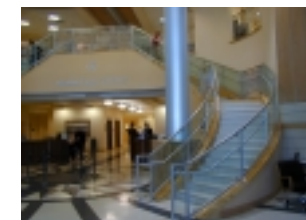
called *refractive relief sculpture*. "MVD288" is a mirage vapor drawing by Larry Bell. Mr. Bell used electricity and special chemicals to create this beautiful piece. **COURTROOMS and CHAMBERS**



Larry Bell's MVD288



Views of one of the courtrooms



Grand staircase welcomes guests to the Courthouse